

---

MUZIWETHU  
PROJECTS

# Company Profile



# About Our Company

## OVERVIEW

At Muziwethu Projects, we deliver construction solutions that are grounded in technical expertise, integrity, and exceptional project management. Our growing portfolio showcases our ability to respond effectively to both planned developments and emergency rebuilds across industrial, commercial, and residential environments.

Whether we're restoring infrastructure damaged by natural disasters or constructing new facilities from the ground up, we approach every project with:

- A focus on quality and compliance
- A commitment to on-time delivery
- A drive for client satisfaction
- Hands-on project oversight from start to finish



### **RAYANNE NAIDOO**

Chief Executive Officer

---

Email - [rayanne.naidoo@muziwethu.co.za](mailto:rayanne.naidoo@muziwethu.co.za)

Cell - (+27) 82 898 0372



### **DURAN NAIDOO**

Operations Manager

---

Email - [duran.naidoo@muziwethu.co.za](mailto:duran.naidoo@muziwethu.co.za)

Cell - (+27) 83 641 9136

# Mission & Vision

## MISSION

At Muziwethu Projects, our mission is to shape the future of construction by delivering enduring structures that uplift communities and transform the built environment. Rooted in excellence, we combine superior craftsmanship with innovation to create safe, sustainable solutions tailored to our clients' visions. Through unwavering integrity, collaborative partnerships, and a deep commitment to quality, we strive to build more than just buildings — we build trust, opportunity, and a legacy of resilience for generations to come.

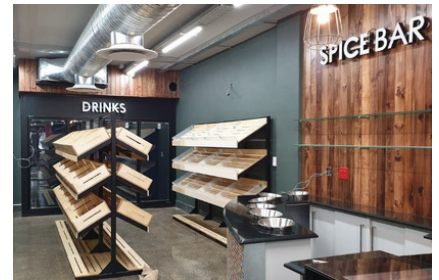
## VISION

At Muziwethu Projects, we envision a future where infrastructure empowers communities, reflects sustainability, and inspires progress. As a proudly 100% female-owned company, we aim to lead by example in transforming the construction industry through inclusive leadership and innovation. Our vision is to be a trusted cornerstone in South Africa's development — building not just structures, but lasting impact and opportunity for all.

# What We Offer

## GENERAL BUILDING

New Buildings | Additions | Alterations | Renovations



## CIVIL CONSTRUCTION

Road & Sidewalk Construction | Concrete Work | Paving



# Our Projects

*“Built on Strength. Driven by Precision”*

## BALFOUR ROAD

CONSTRUCTION OF NEW WAREHOUSE

### Project Background:

Muziwethu Projects was appointed to construct a 3,200m<sup>2</sup> warehouse with integrated office and storage facilities.

### Reason for Rebuild:

Reinstatement of operational infrastructure after fire destruction at the KZN Resins Factory.

### Scope of Works:

- Earthworks and layer works
- Full wet trades including brickwork, plastering, concrete & enabling works
- Project management and coordination of all phases
- Steel structural erection of the warehouse framework
- Electrical installations throughout the facility
- Plumbing systems for toilets and industrial use
- Fire protection installation to meet safety regulations
- Finishing items including ceilings, flooring, painting, fittings & roller shutter doors

### Outcome:

Muziwethu Projects successfully delivered a high-quality rebuild, restoring essential infrastructure with enhanced functionality and compliance.



# MOUNT EDGECOMBE GOLF ESTATE

## GABION RETAINING WALLS

### Project Background:

Following the devastating KZN 2022 floods, Muziwethu Projects was appointed to mitigate severe earth erosion threatening residential properties within Mount Edgecombe Golf Estate. The damage spanned **four properties**, with a total affected length of **120 meters** and a height of approximately **3 meters**.

### Reason for Construction:

Stabilization and protection of properties due to earth washaway caused by flood damage.



### Scope of Works:

- Earthworks and layerworks
- Construction of **gabion retaining walls** (120m length x 3m height)
- Installation of **sub-soil drainage systems** using agricultural pipes and flow drains
- Repairs to existing and installation of new **stormwater and sewer lines**, including **manhole construction**
- **Piling** to strengthen foundations
- **Topsoiling and grassing** for erosion control and aesthetics
- **Paving** reinstatement to affected areas



### Outcome:

This project showcased Muziwethu Projects' capability to deliver technically sound, environmentally responsible, and visually seamless solutions for flood damage recovery.

*“Building hope, one foundation at a time”*

## IMAANI VILLAGE ORPHANAGE

NEW FACILITIES FOR BOYS AND HOUSE MOTHERS

### Project Background:

Muziwethu Projects was honoured to play a role in the construction of new residential facilities for boys of all ages and their house mothers at Imaani Village Orphanage, situated in the heart of the Umbululu community. This meaningful, donor-funded initiative was commissioned by HUDA SA, with the primary objective of creating safe, functional, and nurturing living spaces for vulnerable children.

In recognition of Imaani Village’s vital role in the community, Muziwethu Projects undertook the project at discounted rates. Additionally, as part of our ongoing commitment to social responsibility, we donated a percent of our profits back to the orphanage in the form of a sponsorship, helping to further support their essential work.

### Scope of Works:

- Full new build from foundations to final finishes
- Construction of 8 bedrooms, a kitchen, and shared common areas
- External works including earthworks, retaining walls, and paving

### Community Impact & Contribution:

This project reflects Muziwethu Projects’ commitment to uplifting vulnerable communities through ethical construction practices and meaningful social investment. We are proud to have played a role in creating a secure and welcoming environment for the children and caregivers of Imaani Village.

*“Smart design. Safe spaces. Seamless delivery”*

## PHOENIX MUSLIM SCHOOL

NEW 1,200M<sup>2</sup> CARPARK AND PLAY AREA

### Project Background:

Muziwethu Projects was contracted to design and construct a **1,200m<sup>2</sup> carpark** and associated infrastructure at **Phoenix Muslim School**. The project aimed to provide more parking space and functionality within the school premises, while also creating a **designated play area for children**.



### Scope of Works:

- Full **engineering design** for all aspects
- **Earthworks and layerworks** to prepare and stabilize the site
- Installation of **concrete kerbing** and **Loffelstein retaining walls** for structural support
- Construction of a **structural steel staircase** and **driveway gate**
- Creation of a **kids' play area** with grassing
- Full **paving and asphalt surfacing** of the carpark
- **Painting of parking bays** and installation of directional **signage**



### Outcome:

This project enhanced the school's infrastructure by providing a **durable, well-organized, and child-friendly environment**, improving access for vehicles, and creating safe spaces for learners. The project reflects Muziwethu Projects' commitment to delivering **tailored solutions** for educational institutions with attention to both function and aesthetics.



*“Precision Demolition with environmental care”*

## YARA ANIMAL NUTRITION

DEMOLITION OF ACID STORAGE TANK AND BUND

### Project Background:

Muziwethu Projects was appointed by **Yara Animal Nutrition SA** to carry out the controlled demolition and safe removal of an **acid storage tank and bund structure**. The project required stringent safety protocols and environmental management due to the presence of hazardous materials and contaminated soil.

### Scope of Works:

- **Safe dismantling of structural steelwork** attached to the tank, including the **internal agitator**, associated **pipework**, and all **instrumentation and mechanical systems**
- **Mechanical demolition** of the storage tank using **shears**, selected to eliminate potential fire hazards
- Demolition and removal of **reinforced concrete bund walls and floor**
- **Lime treatment** of contaminated in-situ material, followed by **leveling and compaction** of the site
- Environmentally responsible **disposal and handling of all contaminated components and concrete debris**

### Outcome:

This project showcased Muziwethu Projects’ ability to execute high-risk demolitions with a focus on **safety, environmental compliance**, and **site rehabilitation**. The works were completed efficiently and in line with both client expectations and industry regulations.



# Current Projects

## ENGEN REFINERY

TANK 103 & 105 CONSTRUCTION OF RING BEAM

**Location:** Tara Road, Durban

**Client:** Engen Petroleum / Vivo Energy

**Scope of Works:**

- Earthworks
- Layerworks
- Concrete formwork and reinforcement for ring beam

## YARA ANIMAL NUTRITION

NEW FILTER PRESS STRUCTURE, MCC BUILDING & CIVIL WORKS

**Location:** Dickens Road, Umbogintwini

**Client:** Yara Animal Nutrition

**Scope of Works:**

- Piling
- Demolition work
- Construction of MCC building
- Concrete, formwork, reinforcement, and steel structural roofing for filter press building
- Tank bases and bund area

## ENGEN REFINERY

TANK 226 CONSTRUCTION OF RING BEAM & INTERNAL LEAK DETECTION AND DRAINAGE SYSTEM

**Location:** Tara Road, Bluff

**Client:** Engen Petroleum / Vivo Energy

**Scope of Works:**

- Earthworks
- Layerworks
- Concrete formwork and reinforcement for ring beam
- Construction of internal leak detection and drainage system

## INBEV SA BREWERIES

NEW COMPRESSOR ROOM

**Location:** Prospecton Plant, Durban South

**Client:** AB InBev South Africa

**Scope of Works:**

- Foundations and brickwork
- Concrete roof slab
- Electrical installations and roller shutter doors
- Construction of compressor plinth
- Internal finishes—plaster and painting
- Alterations and additions to existing building

# Credentials & References

## ACCREDITATION AND COMPLIANCE

**Muziwethu Projects** is a fully accredited construction company with a **CIDB 4GB PE & 4CE PE grading**, allowing us to undertake a wide range of building and civil works.

We're registered with **FEM** for **Workmen's Compensation** and hold a **Contractors All Risk Insurance** policy, offering full or project-specific cover.

We're also registered with the **NHBRC**, ensuring compliance with national building standards.

As a **Level 1 B-BBEE Contributor**, we align with the **Department of Trade, Industry, and Competition's** Codes of Good Practice.

Our commitment to safety is backed by our **ISO 45001 certification** for Occupational Health and Safety Management Systems.



## REFERENCES

### SAB Engineering Consultants

**Mani Govender**

Director

+27 31 502 1570

+27 82 325 3144

### MSS Design Studio

**Mohamed Sayed**

Director

+27 31 563 3379

+27 84 555 9085

### Yara Animal Nutrition SA

**Justin Pillay**

Project Engineer

+27 31 910 5100

+27 60 547 3584

### Soni Engineers

**Yacoob Soni**

Director

+27 72 437 8311


# Get in Touch

## **RAYANNE NAIDOO**

---

CEO

 [rayanne.naidoo@muziwethu.co.za](mailto:rayanne.naidoo@muziwethu.co.za)


 +27 82 898 0372

## **DURAN NAIDOO**

---

Operations Manager

 [duran.naidoo@muziwethu.co.za](mailto:duran.naidoo@muziwethu.co.za)

 +27 83 641 9136

## **OFFICE LINE**

---

+27 31 201 4101

## **ADDRESS**

---

Unit 1, 37 Vernon Road, Essenwood, Durban, 4001